



# ATLASSIAN SERVER EOL

**THE FUTURE FOR ON-PREM**



**03 INTRODUCTION**

**04 THE ROADMAP OF SERVER EOL**

**05 DATA CENTER IS A LONG-TERM ON-PREM SOLUTION**

**06 THE ENTERPRISE VERSION OF ATlassian SOFTWARE**

**07 NEW DATA CENTER CHANGES**

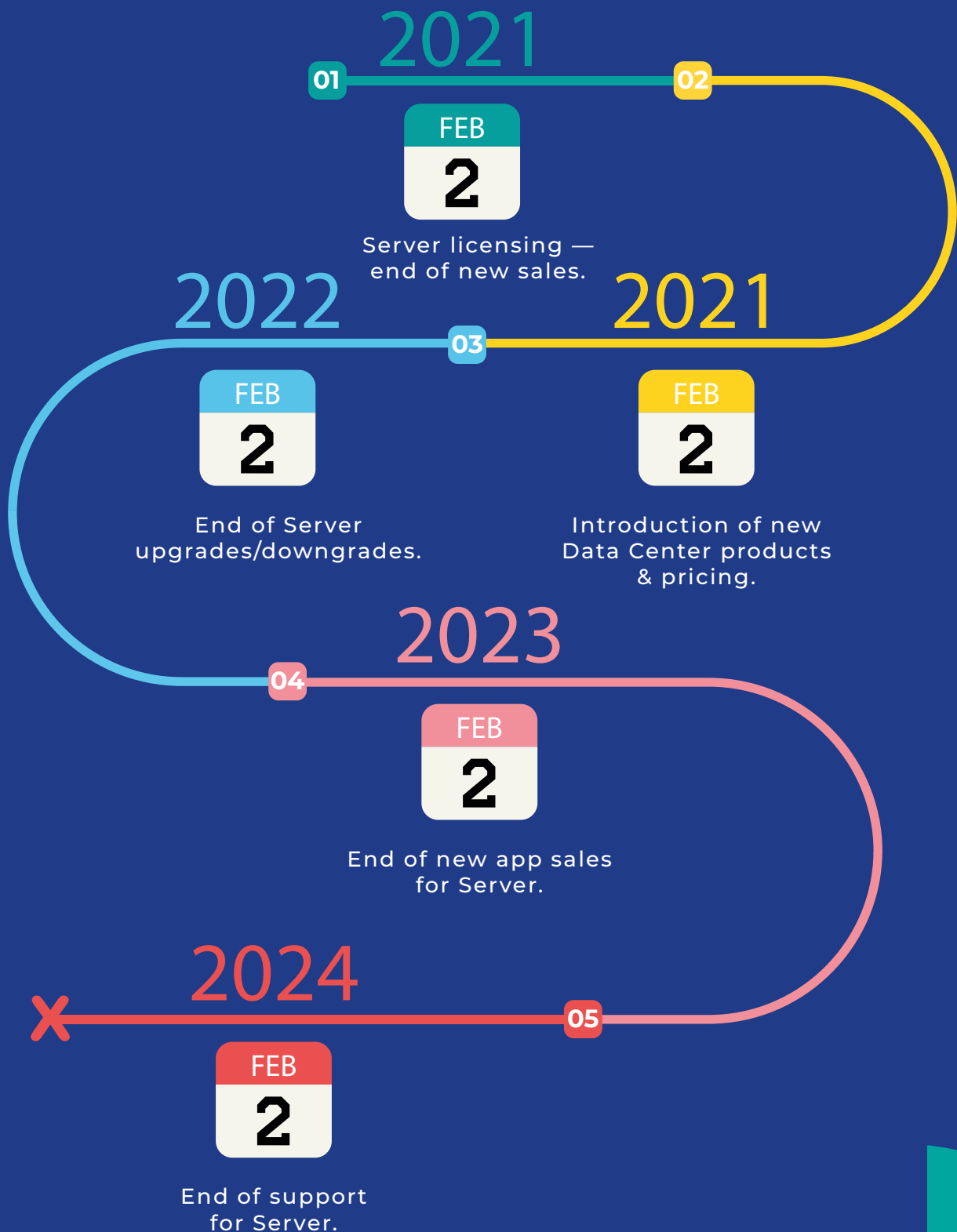
**08 THE FUTURE**

# INTRODUCTION

In October 2020 Atlassian announced the End-of-Life of Server products which is the latest step on Atlassian's journey to the Cloud. Over the last few years, Atlassian has heavily invested and improved its Cloud offering with 90% of new customers preferring it over other options. More recently, Atlassian has expressed a commitment to continue investing in Data Center (DC). This white paper focuses on that commitment with a look into why DC is a great option for many Server clients.

For some Atlassian users, a migration to the Cloud is not suitable, or at the very least a long way off and requires adequate planning. Organisations that fall under this category who require an on-premise option can look to Data Center as a viable long-term solution for enterprise-level functionality and support.

# THE ROADMAP OF SERVER EOL



# DATA CENTER IS A LONG-TERM ON-PREM SOLUTION

Atlassian Data Center is the only supported on-prem solution beyond Server. Atlassian Server will be supported through to Feb 2024 when it reaches EOL. This may seem like a long way off now but this time should be spent wisely as a stop-gap period to plan a long-term Atlassian strategy. Even before 2024, the Server platform will be restricted in certain ways. Here's how:

## **New licensing and expansion:**

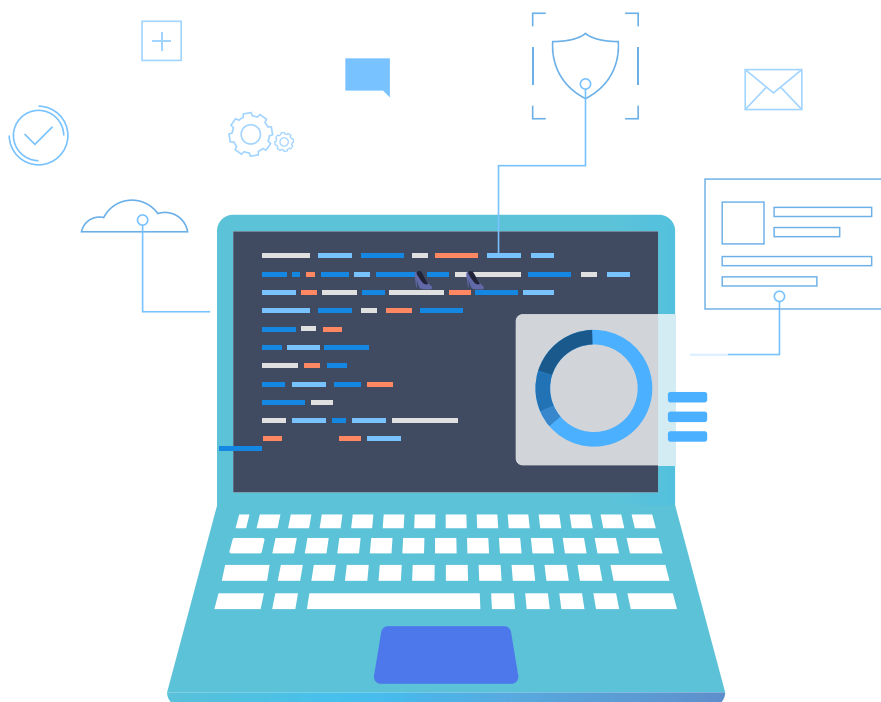
From Feb 2021, Atlassian will no longer sell new Server licensing and from Feb 2022 users will not be able to increase the user tier of Server licensing. Therefore, remaining on Server may not be appropriate for users who will require expansion.

## **Support and new features:**

From Feb 2022, Atlassian will only provide security bug-fixes for critical vulnerabilities which will not cover full Server support as provided now i.e. database, browser, Java and bug fixes. Server WILL be supported through to 2024, however, it's fair to say that Atlassian's focus lies elsewhere so don't expect the introduction of new features.

## **Marketplace:**

Historically, there has been a larger range of Marketplace apps available on the Server platform than Data Center or Cloud. Starting May 1, 2021, Atlassian will stop accepting new Server app submissions for the Atlassian Marketplace. Users will still be able to purchase Server apps until February 2, 2023, but may find there is less choice over the coming years as new apps will not be added to the Marketplace. It remains to be seen how Marketplace vendors react to this, but like Atlassian, moving forward, the focus will be on Data Center and Cloud.



# THE ENTERPRISE VERSION OF ATLASSIAN SOFTWARE

Data Center is and will continue to be the enterprise version of self-managed/on-prem Atlassian Software. From a user perspective, Server and DC are much the same. However, DC has always been the Atlassian offering packed with extra features not available on Server. These features are geared toward the needs of Enterprise Atlassian users who tend to run larger and more complex environments.

Additional features of Data Center include:

- Smart Mirroring and zero time backups with integrity tests in Bitbucket.
- SAML 2.0 support.
- Zero downtime upgrades in Jira Software and Service Management.
- Confluence read-only mode.
- Advanced auditing.
- CDN support.
- The option to deploy over multiple nodes to provide increased resilience and performance at scale.

## **REGULATORY, COMPLIANCE AND DATA RESIDENCY**

For enterprises operating in highly regulated industries such as finance, healthcare, or government sectors, compliance is critical. But even for those that aren't, adherence to comply with complex policies is still often required.

Atlassian Data Center products offer features such as advanced auditing and enterprise user management, removing the hassle of staying secure and compliant.

Data Center will continue to offer customers who need strict control over data residency full control over deployment location. Data Center could be hosted on-premise via your own Data Center, on Cloud infrastructure services such as AWS and Azure or Clearvision can manage this for you via [ClearHost](#).

## **COMPLETE CONTROL OVER CUSTOMISATIONS AND OPERATIONS MANAGEMENT**

Some customers operate highly customised Atlassian application environments which cannot easily be migrated and operated via Atlassian's Cloud service. Although some customers will plan a strategy to replicate this in the Cloud, Data Center will continue to be an ongoing option to support such customers.

Other Atlassian users may have strict change control processes and need to tightly control the introduction of upgrades and new features which sometimes make a Cloud deployment unsuitable. Deploying Data Center allows users full control of operations management to suit requirements.

# NEW DATA CENTER CHANGES

Atlassian will be increasing the price of Data Center products from Feb 2021 onwards. However, this will coincide with the release of new versions of Data Center which will include additional products and services that previously had to be purchased separately:

- o **Confluence Data Center** - Team Calendars and Analytics.
- o **Jira Software** - Advanced Roadmaps.
- o **Jira Service Management** - Insight - Asset Management and Insight Discovery.
- o **Free Priority Support** - \$5,000 value and will be included in most Data Center products.
- o **Bamboo Data Center** - There will be a Data Center version of Bamboo. It is currently only available as a Server version.
- o **Ongoing Investment and Development** - To be clear, Atlassian intends to continue developing and improving Data Center. See the Data Center [Roadmap](#).

## LOYALTY DISCOUNT FOR SERVER CUSTOMERS

Atlassian is rewarding existing Server customers with a loyalty discount when moving to Data Center. This will provide up to a 3 year discount off Data Center subscription costs. The exact discount depends on a number of factors, such as existing Server licensing, when you migrate to Data Center, and user level.

Further information - [Data Center Loyalty Discounts](#).

# THE FUTURE

Atlassian has a Cloud-first approach and the vast majority of new customers are going to the Cloud, so what is the future of Data Center?

There is and will continue to be a significant number of Atlassian users who for a variety of reasons (some of which are covered in this document) will continue with a self-managed/on-prem Atlassian deployment. These are typically customers with large, complex and highly customised deployments and/or who operate in regulated industries.

For the vast majority of customers, Atlassian Cloud is proving the platform of choice and the many improvements Atlassian has made to Cloud has only accelerated this. The introduction of Premium and Enterprise Cloud versions has meant Atlassian Cloud can address many of the complex requirements enterprise users have.

Nonetheless, Atlassian realises the need to continue providing an on-premise solution. In Data Center, it is consolidating efforts and investing in one platform to serve customers with specific needs. Atlassian is committed to developing and investing in new capabilities for Data Center products. See the [Data Center Roadmap](#) for further insight.

Watch this [webinar](#) for a simplified explanation of Atlassian's announcement concerning the End-of-Life of Server products.